



Manual for Wall Mounted Type Indoor Units of Multiple Connection Units

Models:

GMV-R20G/D	GMVL-R20G/D	GMVR-R20G/D
GMV-R25G/D	GMVL-R25G/D	GMVR-R25G/D
GMV-R35G/D	GMVL-R35G/D	GMVR-R35G/D
GMV-R50G/D	GMVL-R50G/D	GMVR-R50G/D

Please read this manual carefully before using it



USER NOTICES

- ☆ **When operating, the general capacity of the cooperating indoor unit should not larger than the outdoor unit's. Otherwise, it will cause the shortage of cooling (heating) capacity.**
- ☆ **The power supply of the indoor unit must be the unified power supply. The indoor unit cannot have the individual power switch, and the entire indoor unit can only be controlled by one main power control. Disconnect the main power of all the indoor units before cleaning.**
- ☆ **In order to turn on the units successfully, the main power switch should be opened 8 hours before the operation.**
- ☆ **After receiving the turn off signal, every indoor unit will continue to work for 20-70sec to make use of the rest cool air or the rest heat air in the heat exchanger, while preparing for the next operation. And this is normal.**
- ☆ **When the chosed operating mode of the indoor unit are clash with the operating mode of the outdoor unit, the malfunction light will glimmer after 5sec on the indoor unit or remote controller showing that the operation clash, then the indoor unit will stop. At this time, change the operation mode of the indoor unit to the one that would not clash with the outdoor operating mode to make the operation normal. The cooling mode is not clash with the dry mode, while the fan mode is not clash with any mode.**

Model	GMVL-R35G/D	GMV-R35G/D	GMVR-R35G/D	GMVL-R50G/D	GMV-R50G/D	GMVR-R50G/D
Functions	Cooling only	Cooling and heating	Cooling and heating	Cooling only	Cooling and heating	Cooling and heating
Cooling capacity (W)	3500	3500	3500	5000	5000	5000
Heating capacity (W)	---	4000	4000	---	6200	6200
Electric heating power (W)	—	400	—	—	400	—
Recycling air volume (m ³ /h)	500	500	500	700	700	700
Noise (dB (A))	35	35	35	46	46	46
Motor output power (W)	11	11	11	20	20	20
Phase number-Voltage-Frequency	220V~ 50Hz					
Dimensions (mm) (W×D×H)	830×189×285			907×195×290		
Water drainage pipe inner diameter(mm)	φ 17			φ 27		
Weight (Kg)	11			12		
Gas pipe diameter (mm)	φ 12.7			φ 12.7		
Liquid pipe diameter (mm)	φ 6.35			φ 9.52		

☆ The above performance parameters are tested and measured under the Q/GD21.10—2002 standards, all the cooling/ heating capacities, operational noises, etc. are the test results of the product upon leaving the factory;

☆ In case of any changes in the parameters, please refer to the nameplate of the product for the finalized data;

Specifications and technical parameters

● Parameters for Wall Mounted Type Indoor Units

Model	GMVL-R20G/D	GMV-R20G/D	GMVR-R20G/D	GMVL-R25G/D	GMV-R25G/D	GMVR-R25G/D
Functions	Cooling only	Cooling and heating	Cooling and heating	Cooling only	Cooling and heating	Cooling and heating
Cooling capacity (W)	2000	2000	2000	2500	2500	2500
Heating capacity (W)	—	2300	2300	—	3000	3000
Electric heating power (W)	—	400	—	—	400	—
Recycling air volume (m ³ /h)	360	360	360	360	360	360
Noise (dB (A))	31	31	31	31	31	31
Motor output power (W)	8	8	8	8	8	8
Phase number-Voltage-Frequency	220V~ 50Hz					
Dimensions (mm) (W×D×H)	830×189×285			830×189×285		
Water drainage pipe inner diameter (mm)	φ 17			φ 17		
Weight (kg)	11			11		
Gas pipe diameter (mm)	φ 9.52			φ 9.52		
Liquid pipe diameter (mm)	φ 6.35			φ 6.35		

Notices for use

- Please read this manual carefully before use this unit, and operate it correctly according to the guide in this manual.
- Please take specially note to the meaning of these two marks:



Warning!: This mark means that it may cause casualty or badly heart if the operation is incorrect.



Note!: This mark means that it may cause casualty or property loss if the operation is incorrect.

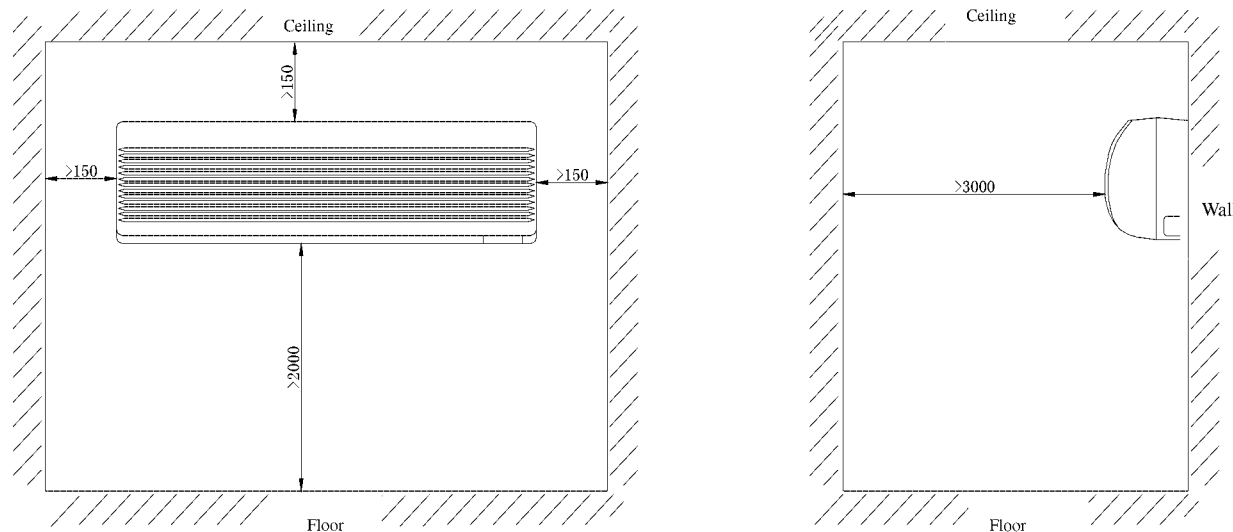


Warning!

- It must be reliably earthed. Earth should be connected onto special earth setting of the building. Do install it by professional personnel. Please don't connect the earthing line with the gas pipe, water pipe, sewage drain or other places that professional personnel consider unreliable.
- There should be creepage protect switch and air switch with enough capacitance in rated circuit.
- Ensure that the wire is connected correctly, otherwise, it can cause electric shock or fire.
- Do not stop the unit by turning off the power supply, otherwise, it can influence the unit life span.
- Don't damage the wire or adopt the improper wire, otherwise it can cause electric shock or fire.
- Please don't operate the unit by wet hand, that may cause the danger of electric shock..
- Don't insert your hands or stick into the air intake or outlet vents. It can cause danger.
- When having a burning smell or smoke, please turn off the power supply and contact with the service center. If abnormality still exists, the air conditioner could be damaged, or may cause electric shock or fire.
- Don't attempt to repair the air conditioner by yourself, the improper maintenance will cause electric shock or fire, should contact with the service center.
- Don't use fuse excluding the fuse of correct capacity. Improper wire could cause the break down or fire.
- When unit is not in use for a long time, to turn off the general power supply.
- When cleaning the unit, to turn off the power supply, otherwise it may cause electric shock or damage.
- Don't place a space heater near the air conditioner. Airflow from the air conditioner can cause incomplete combustion to the space heater and may cause intoxication of carbon monoxide.
- Keep chemical spray away from the outdoor unit for more than 1meter. It is likely to ignite and explore.
- Don't block the air intake or outlet vents of both the outdoor and indoor units. It can decrease the air conditioning capacity or cause a malfunction.

The installation of wall mounted indoor unit

● Schematic diagram of installation diagram



Important Notice:

- The unit must be installed by the professional personnel according to this install instruction to ensure the well use.
- Please contact the local Gree special nominated repair department before installation. Any malfunction caused by the unit that is installed by the department that is not special nominated by Gree would not be dealt with on time by the inconvenience of the business contact.
- It should be guided under the professional personnel when the air conditioner unit is moved to other place.

● The installation of the rear panel

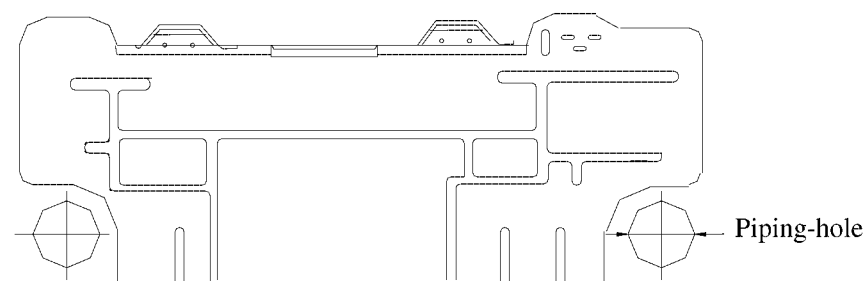


Fig.1

1. Find the horizontal position by seton method; since the drainage pipe is on the left side, adjust the rear panel to make its left side a little bit lower.
2. Fix the rear panel on the wall by bolt.
3. After installing the rear panel, pull it by hand to check if it is firm enough. The hang panel should support the weight of an adult (60KG), and the weight shared by every bolt for steady should be fairly even.
4. The diameter showed on the fig.1 is: 50mm for model 20,25,35; 65mm for model 50.

Air direction adjustment

● Up and down air direction adjustment

- ☆ To operate the guide louver motor by wireless remote control, the louver rotate at upward/downward direction meanwhile supply air, and it can supply air and stop at a certain angle.
- ☆ If “SWING” button of the wireless remote control has been pressed, the guide louver will swing and supply air at upward and downward direction, when the button is repressed once again, the unit will stop running.

● Left and right air direction adjustment

- ☆ Adjusting the horizontal swing louver at left and right direction, the left and right air outlet direction can be adjusted, the air outlet direction also can be adjusted from three different direction, the air can reach all part of the room, to make the room temperature more even.

Troubleshooting

● GREE service center

Immediately stop all operations and plug out, contact the dealer in following situations.

- ☆ There are harsh sound during operation;
- ☆ Protection switch often breaks;
- ☆ Carelessly splash water or something into air conditioner;
- ☆ Water is leaking in the room;
- ☆ There is an abnormal heat in power supply cord and power plug;
- ☆ Odors emitted during operation.

● After services

☆ In any case that the air conditioning units that you have purchased happen to have any quality problem or other troubles, please contact the local authorized GREE After Service Department. Refer to the “Directory of Nationwide Network of GREE Service Centers” for details.

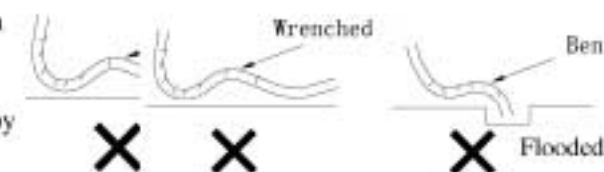
The installation of wall mounted indoor unit

● Install the piping hole

- ☆ Make the piping hole (Φ50 or Φ65) in the wall at a slight downward slant to the outdoor side.
- ☆ Insert the piping-hole sleeve into the hole to prevent the connected piping and wiring from being damaged when passing through the hole.


● Install the drainage pipe

- ☆ For well draining, the drain hose should be placed at a downward slant.
- ☆ Do not wrench or bend the drain hose or flood its end by water. (Fig.2)



- ☆ Wrap heat resistant material when connect the longer drainage tube though indoor.

● Install the connection pipes

 Connect the connect pipe with the two relative leading pipe, tie the nut on tie-in of the connect pipe tightly.

Note!

- ☆ Be careful in bending the connection pipes, or you will damage the pipes.
- ☆ If the tightening torque is too great in tightening the flare nut, leakage will happen.

● Electrical wiring

 **Note: The power of every indoor unit should be unity power supply.**

1. Open the panel upward;
2. Disassembly the set screw on the connect panel, refer to fig.3;
3. Route the power connection cord from the back and button of the appliance box and though the wiring hole upward;
4. Connect the blue wire of the power connection cord to the terminal “N (1)”, the brown one to “2”, and the yellow-green one (earth wire) to “⊕”. Compact the power connecting pipe with the coarctate through listed in front of the connect pipe platoon on the appliance box, as shown in fig.4.

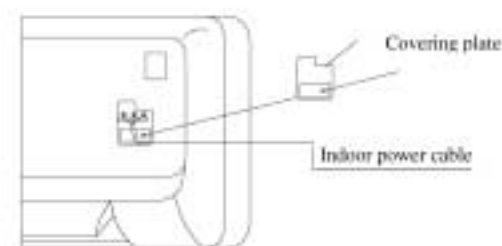


Fig.3

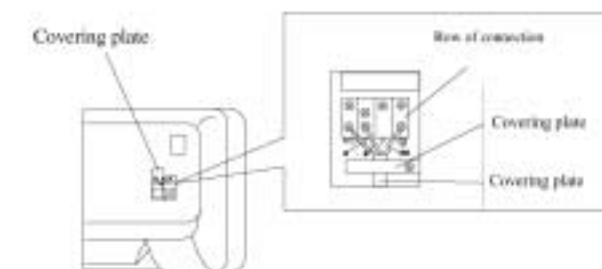
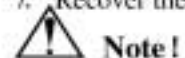


Fig. 4

The installation of wall mounted indoor unit

5. Connect the wiring (communication) through the piping hole of the chassis and the button of the appliance upward, then insert them on the control panel CN15, CN16 and CN17 of the indoor unit, and clamp them with the wire clamp packed in the chassis;
6. Reinstall the wiring cover on the original place and tighten the bolt;
7. Recover the surface panel.



Note!

- The incorrect of wiring connecting would lead malfunction of some of the electric elements.
- Make sure that the lead between the connect end and the clamp end has some need space after the wire is fixed.

● Install the indoor unit

1. Refer Fig. 5 (a) and (b) for piping mode of indoor unit. When piping (wiring) at left or right side, cut off tailings from pipe left from chassis of host (as shown in fig. 5 (c)).
 - ☆ Cut down tailings 1 when only the power cord is led.
 - ☆ Cut down tailings 1,2 (or 1,2,3) when the connection cord and wire are led.
 - ☆ The pad wire type ①、②、③ are recommended
2. Let the tubing and cord pass through the piping hole after tied up (refer to fig .5 (d)).
3. Hang the claw behind the indoor unit on the pothook on the wall rear panel, move the unit left and right to check if the body is firm.
4. Guarantee that the install height of the indoor unit should above 2.0m from the floor.

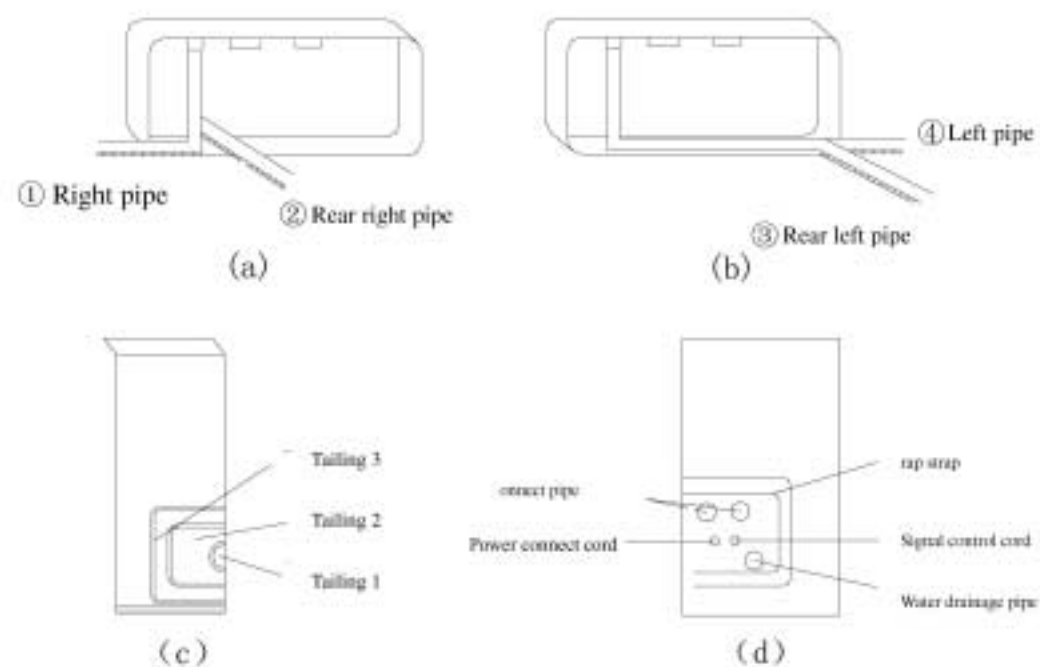


Fig.5

Troubleshooting



Warning!

Never try to do the repairs by yourself. Erroneous maintenance or repairs will cause electric shock or fire hazard. Please contact the authorized GREE Service Center for professional maintenance and repairs.

Phenomena	Troubleshooting
Not operate immediately when the air conditioner is restarted.	Once the air conditioner is stopped, it will not operate in approximately 3 minutes to protect itself.
There are odors emitted after operation is started.	This is caused by the odor from furniture or cigarette that was sucked in the unit but now be blown from it, when the unit is conditioning.
Sound of water flow can be heard during operation	This is caused by the refrigerant flowing inside the unit.
Mist is emitted during cooling operation.	Because the air of the room is cooled down rapidly by the cold wind and it looks like the fog.
Creaking noise can be heard when start or stop the unit	This is caused by the deformation of plastic due to the change of temperature.
Air conditioner does not operate at all.	<ul style="list-style-type: none"> Has the power been shut down? Is the power plug well plugged in? Is the leakage protection switch tripping off? Is voltage higher or lower? Has the TIMER ON been well set?
Cooling (heating) efficiency is not good.	<ul style="list-style-type: none"> Is SET TEMP. suitable? Is air inlet or outlet obstructed? Are air filters dirty? Are the windows or doors closed? Is indoor fan speed set at low speed? Is there any other heat source in your room?
Wireless remote control is not available	<ul style="list-style-type: none"> When changing batteries etc, wireless remote control may halt. Please take off rear cover and press ACL to resume it. The unit is interfered by abnormal interference or changing function too frequently, wireless remote control cannot control occasionally. Plug out power plug and reinsert it well could resume normal operation. Is the control in the receiving area? Or is there obstruction? Check if the voltage of batteries in the control is enough, if not, change batteries.

Adopt cleaner or water to wash filter, if the filter is too dirty (like oil spot), wash it by warm water (below than 45°C) melted with natural cleaning fluid then dry it in shade.

⚠ Note!

- ☆ Don't wash it by hot water whose temp. is higher than 45°C to prevent fade or deformation.
- ☆ Don't dry it on fire for filter would catch fire or deformation.

3. Install air filter

Along the arrowhead direction reinsert the filters. Put the surface of marked arrow forward, then cover the surface panel and clasp it.

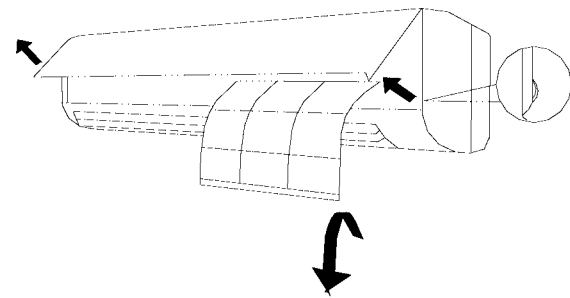


Fig. 3

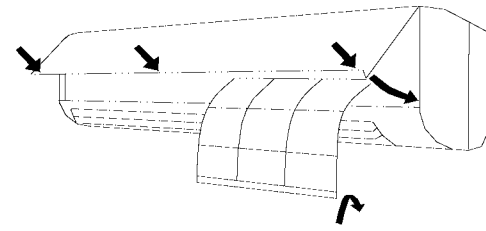


Fig. 4

● Checks to be made before the starting of the operational seasons

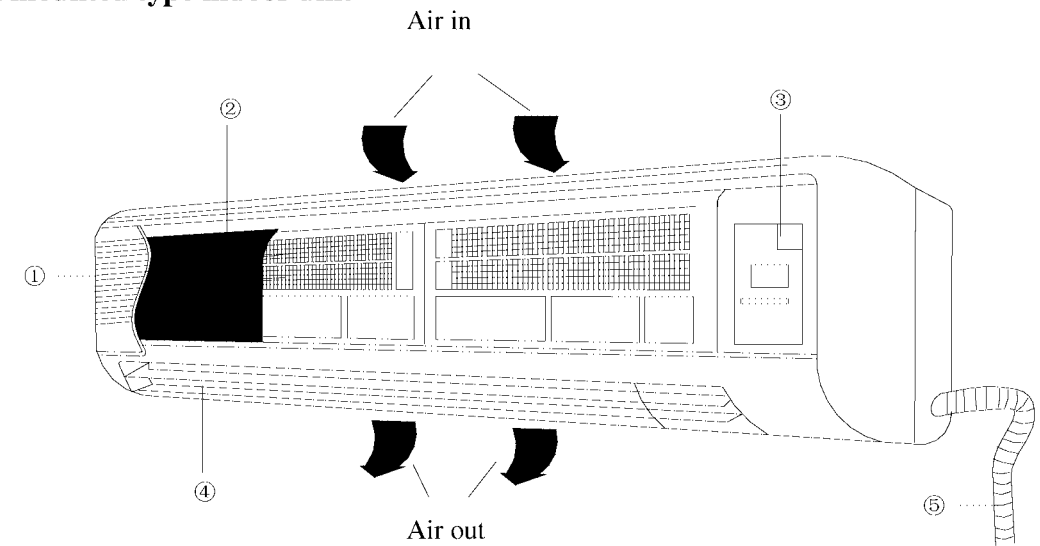
- ☆ Check to see if the air inlet or outlet openings of the indoor and outdoor units are blocked;
- ☆ Check to see if the units are properly grounded;
- ☆ Check to see if the batteries of the remote control have been replaced;
- ☆ Check to see if the air filter screen is properly placed;
- ☆ If the unit is to be activated for operations after long time period of suspension, the main power switch of the air conditioning system should be turned "ON" 8 hours in advance of the operation so as to activate the system successfully and smoothly.

● Maintenance after the ending of the operational seasons

- ☆ Clean the filter screen and the bodies of the indoor and outdoor units;
- ☆ Disconnect the main power supply for the air conditioning system;

Constructions and names of wall mounted indoor unit

Wall mounted type indoor unit



Models	
GMV-R20G/D	GMV-R25G/D
GMVR-R20G/D	GMVR-R25G/D
GMVL-R20G/D	GMVL-R25G/D
GMV-R35G/D	GMV-R50G/D
GMVR-R35G/D	GMVR-R50G/D
GMVL-R35G/D	GMVL-R50G/D

Number	Name	Number	Name
1	Front panel	4	Guide louver
2	Filter	5	Connection pipe
3	Covering plate		

Note: Due to the different models that the appearance may be different

Rating operational status for units

Rating operational status for units

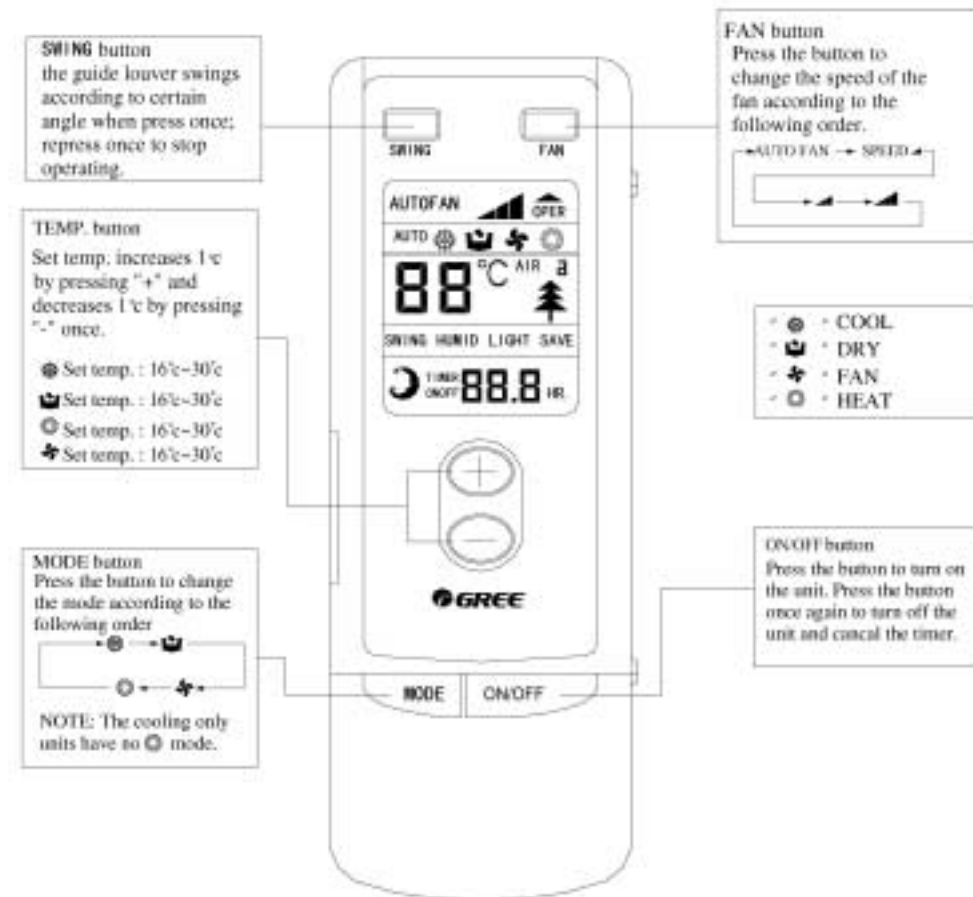
	Indoor side status		Outdoor side status	
	Dry bulb temperature °C	Wet bulb temperature °C	Dry bulb temperature °C	Wet bulb temperature °C
Rating cooling	27	19	35	24
Rating heating	20	15	7	6

Names and functions of wireless remote control

● Names and functions of wireless remote control

⚠ NOTE!

- Make sure that there is no obstruction between the remote control and the signal receptor.
- The remote control signal can be received at the distance of up to about 10m.
- Don't drop or throw the remote control.
- Don't let any liquid flow into the remote control.
- Don't put the remote control directly under the sunlight or any place where is very hot.



⚠ Attention!

Once each of the indoor units receives the signal for stopping operation, the fan and electronic expansion valve of this unit will continue to work for 20-70 seconds so as to make use of the remaining cooling or heating of the heat exchanger, and also to get ready for the next operation. This phenomenon is something normal.

Care and maintenance

⚠ Warning!

- Turn power off before cleaning the unit, otherwise it may cause the electric shock.
- Do not get the air conditioning units wet, which might cause electric shock hazards. It must be made sure that under no circumstance should the air conditioning units be cleaned by way of flushing water.
- Some volatile liquids like the diluent or gasoline may damage the outer appearance of the air conditioner units (Use only the soft and dry cloth or wet cloth soaked with neutral detergent solutions to clean the outer cases of the units).

● Cleaning the front panel

⚠ Note!: Make sure to take it down before cleaning it.

1. Take off the panel by pulling both ends of grooves to the shown position beside at the same time by the arrow direction.
2. Cleaning Clean it by the use of soft brush, water and neutral detergent, then dry it in the shade.

⚠ Note!

Never use water above 45°C to wash the panel, or it could cause deformation or discoloration.

3. Install the front panel

As show in Fig. 2, install the supports into the supporting slots, and insert the axis into the slot, according to the arrowhead direction, to cover the surface panel and clasp it.

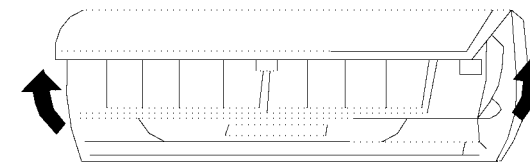


Fig.1

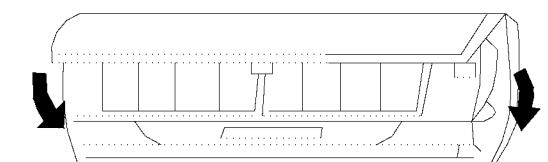


Fig.2

● Cleaning the air filters

☆ Recommended once every three months, if dust is much more around the air conditioner, the air filters should be cleaned many times.

1. Take down the air filter

As show in Fig. 3, at the slot of surface panel to open an angle, pull the air filter downward and take it out.

Care and maintenance

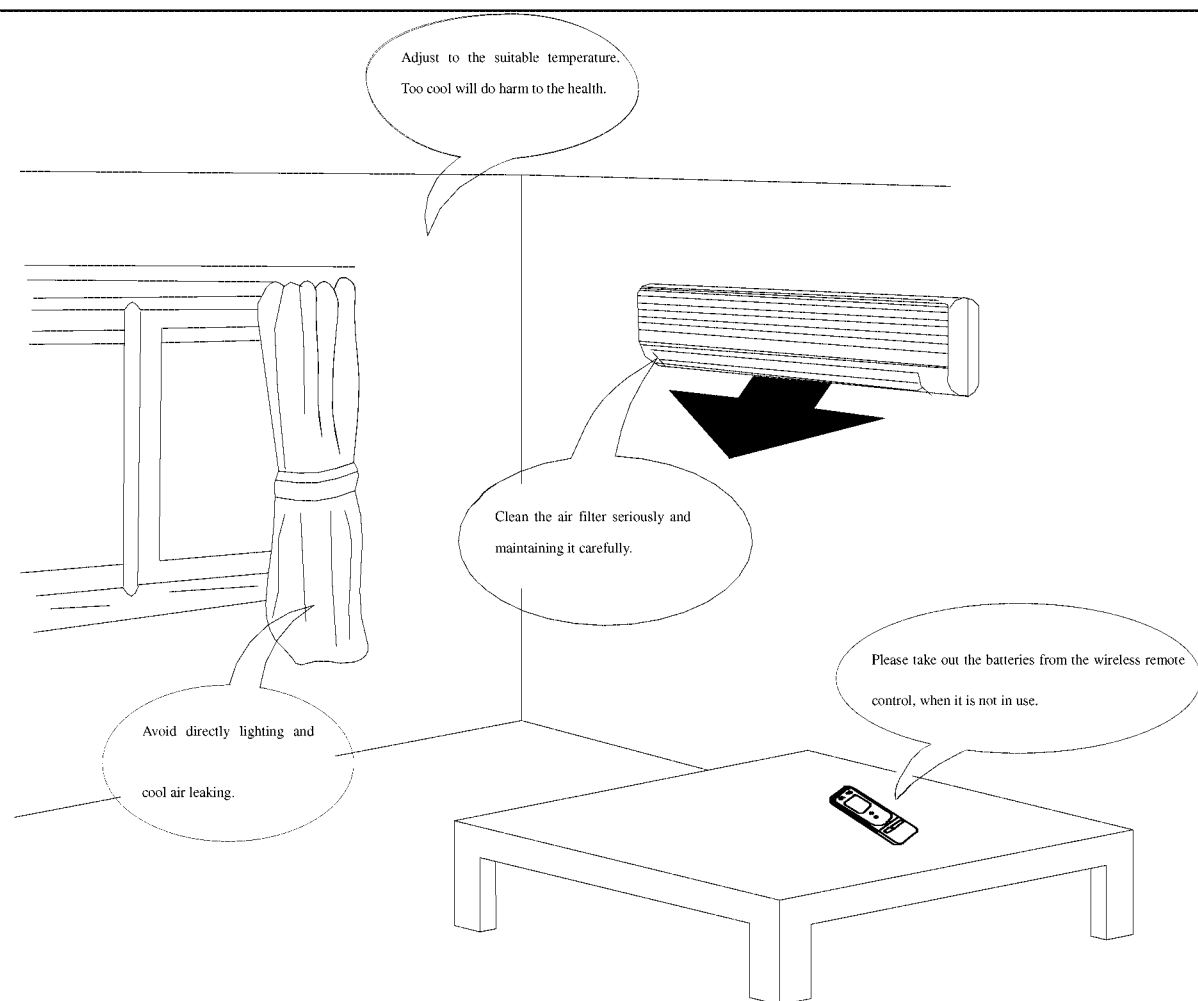
2. Cleaning the air filter

● Installation of batteries into the wireless remote control

The remote control uses two No. 7 alkali batteries.

1. Slide downward the back cover of the remote control and take out the used batteries, and then replace with two new ones (In correct polarities).
2. Close the back cover of the remote control.

The best operation method



● The best operation method

- To adjust the setting temp. properly, it can preclude the electricity wasted. Keep the temp. differences within 5°C.
- When unit is heating, to adjust the guide louver blow air at downwards, when unit is cooling, the direction should be horizontal, in order to obtain the better effect.
- Don't leave windows and doors open for a long time, while operating the air conditioner. It can decrease the air conditioning capacity.
- Don't apply the cold wind to the body for a longtime, and don't adjust the indoor temp. too low, that will cause the physical condition deterioration and health problems.
- Splashing water on the air conditioner can cause an electric shock and malfunction.
- Please do not damage the power cable and signal control cord, if they are damaged, that should be replaced by the exclusive cord.
- This air conditioner allows the voltage fluctuation $220 \pm 10\%V$.
- Don't use the air conditioner for other purposes, such as drying clothes, preserving foods, etc.

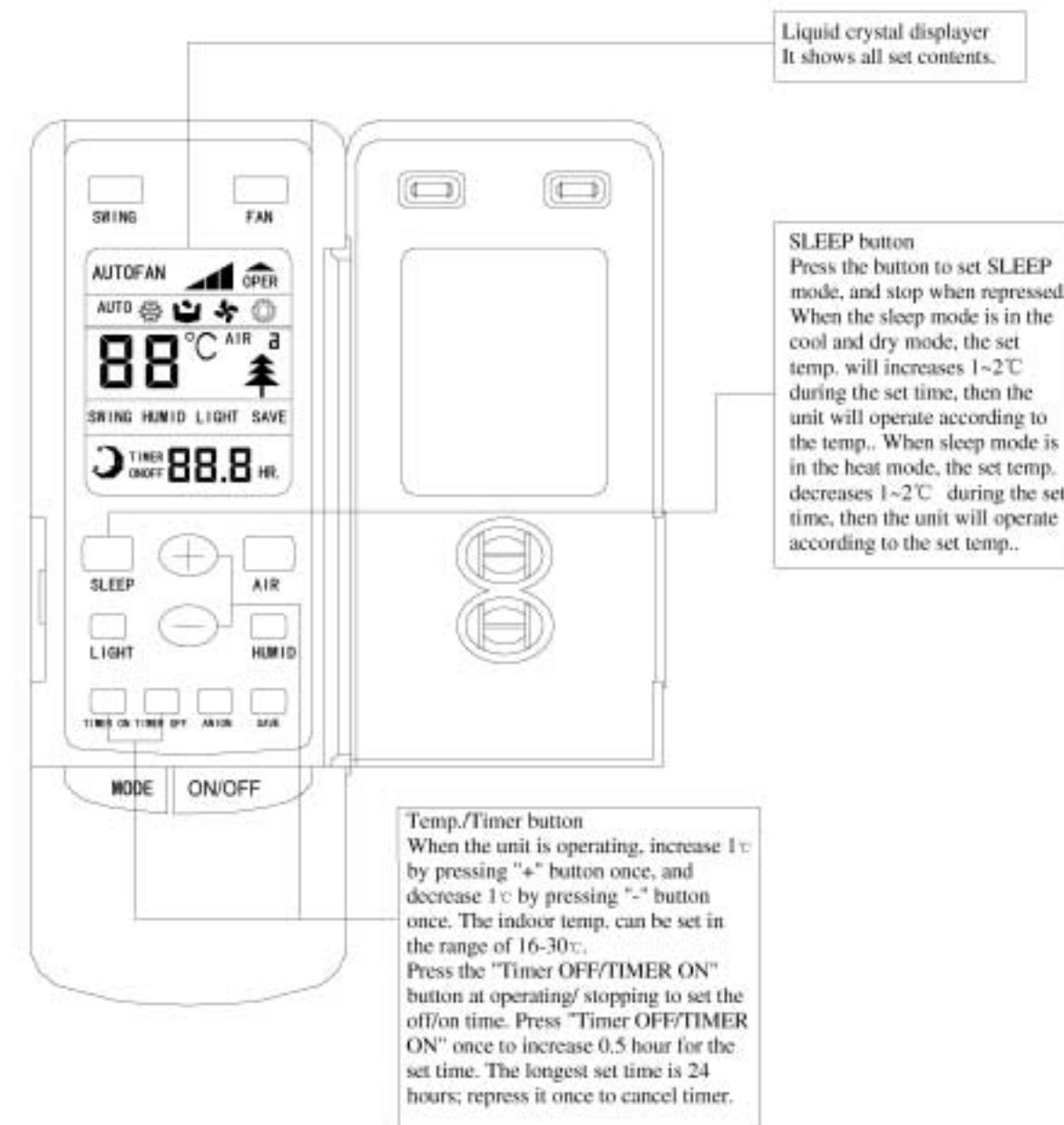
Names and functions of wireless remote control

● Names and functions of the wireless remote control (with cover removed)



Attention!

This model is a general-purpose remote control, which can be applied to varieties of air conditioning systems (various types and performances). No descriptions will be made on the functions and buttons that are not applied in this air conditioning system.



➤ **LCD display**

- ◆ Indicating information of performances selected by various buttons

➤ **Sleep mode button**

- ◆ Press this button once, the unit will go into the sleep mode. Press the button once again, the unit will quit the sleep mode.
- ◆ During the cooling and dehumidification operations after the operations in the sleeping mode, the set temperature will rise by 1—2°C in a certain period of time, and the unit will then operate under the condition of the set temperature. During heating operation after the operations in the sleeping mode, the set temperature will drop by 1—2°C in a certain period of time, and the unit will then operate under the condition of the set temperature.

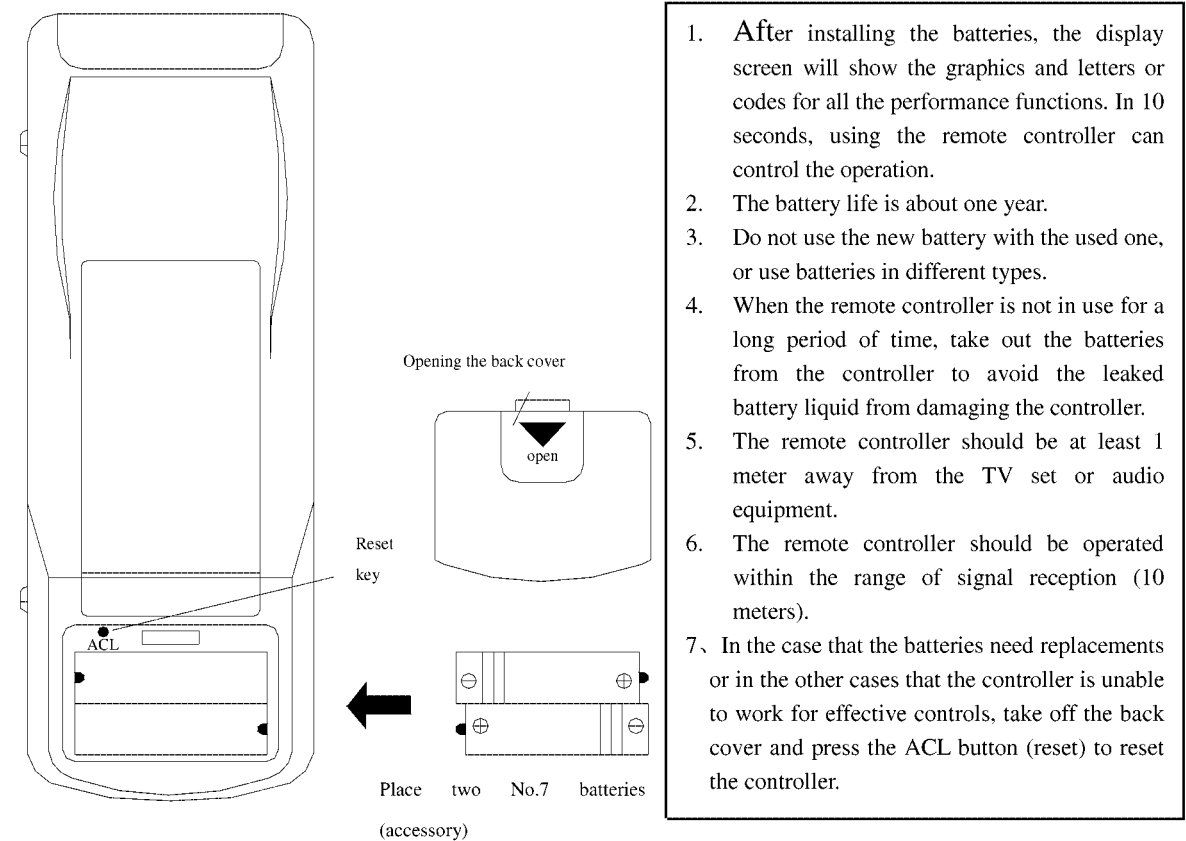
➤ **Temperature/Timing button**

When the unit is operating, press the “+” button once and the temperature will go up by 1°C, and press the “-” button once and the temperature will go down by 1°C. The room temperature can be adjusted at user’s discretion within the range of 16—30°C.

When the unit is in the On/Off mode, press the “Timing” button will set the time for the turning off or on of the unit. Press the “+” button, the timing will be increased by 0.5 hour; press the “-”, the timing will be decreased by 0.5 hour. After adjustments, press the “Timing” button once again to transmit the setting. Press the “Delete” button will cancel the time setting.

Names and functions of wireless remote control

● Guide to operational controls



1. After installing the batteries, the display screen will show the graphics and letters or codes for all the performance functions. In 10 seconds, using the remote controller can control the operation.
2. The battery life is about one year.
3. Do not use the new battery with the used one, or use batteries in different types.
4. When the remote controller is not in use for a long period of time, take out the batteries from the controller to avoid the leaked battery liquid from damaging the controller.
5. The remote controller should be at least 1 meter away from the TV set or audio equipment.
6. The remote controller should be operated within the range of signal reception (10 meters).
7. In the case that the batteries need replacements or in the other cases that the controller is unable to work for effective controls, take off the back cover and press the ACL button (reset) to reset the controller.

General steps:

1. After connecting to the power supply, press the ON/OFF button and the air conditioner unit is ready for operation.
2. Press the Mode button to select the needed operational mode.
3. Press the Swing button to make the air swing blades to sweep the air at a certain angle. Press the button once again to stop the sweeping.
4. Set the fan speed by pressing the Fan button.
5. Press the +/- button to select the needed temperature.

Optional steps:

6. Press the Sleep mode button to set the unit in the sleeping mode.
7. Press the Timer button and press the +/- button as well to set the desired operation time.

Note: When the selected operational mode of the indoor units contradicts to the operational mode of the outdoor unit, the fault alarming light of the indoor unit will flash in 5 seconds and the indoor unit will stop operating. In this case, you may shift the operational mode of the indoor unit to the operational mode not contradictory to that of the outdoor unit; and the unit will restore its normal operation. The cooling mode and the dehumidification mode are not contradictory to each other. The cooling mode and dehumidification mode are not contradictory to each other. The air delivery mode is not conflicting to any other modes.