

1 in 3 air conditioners sold worldwide is made by GREE

No.1 air conditioners manufacturer

40,000,000 sets RAC annual capacity

5,500,000 sets CAC annual capacity

8 production bases

150,000,000 users

Gree, change for life.



GREE ELECTRIC APPLIANCES, INC. OF ZHUHAI

Add: West Jinji Rd, Qianshan, Zhuhai, Guangdong, China 519070
Tel: (+86-756)8522218 Fax: (+86-756)8669426
Email: gree@gree.com.cn Http://www.gree.com

Specifications and appearance are subject to change without notice.
Copyright © Gree Electric Appliances, Inc. of Zhuhai. All rights reserved.

GC-1109-1

Distributor information



COMMERCIAL AIR CONDITIONERS

2012

UNITARY AIR CONDITIONERS



U-Match Series

The U-Match series is a kind of split type air conditioner that the outdoor unit can be connected to different types of indoor units, which can meet various indoor decoration requirements for residential and light commercial locations. The product series are as below:

- **U-Match Super Inverter Series:** The Inverter type U-Match is designed with high efficient and environmental friendly refrigerant (R410A).
- **U-Match Fixed Frequency Series:** The Fixed Frequency type U-Match with economic cost, satisfies different outdoor conditions and power supply requirements.

Outdoor Units (R410A/R22, 50/60Hz)



R410A/R22, 50/60Hz
9,000~60,000Btu/h

Indoor Units (R410A/R22, 50/60Hz)



Floor Ceiling
9,000~60,000Btu/h

Cassette
12,000~48000Btu/h

Duct type
9,000~60,000Btu/h

Top Discharge Condensing Unit & Indoor Units

This is a kind of split type air conditioner with top discharge type outdoor unit which can be connected to different types of indoor units, which to meet various indoor decoration requirements for residential house. The product series are as below:

- **Evolution Series:** Adopt with Inverter compressor and Micro Channel Heat Exchanger provides high efficiency (22SEER) and comfort.
- **Fixed Frequency Series:** Comes with lower cost and reliable operating, the efficiency is 13SEER/14SEER (R410A).

Outdoor Unit



R410A, 22SEER Inverter
18,000~60,000Btu/h
R410A, 13SEER/14SEER
18,000~60,000Btu/h
R22, 10SEER/13SEER
18,000~60,000Btu/h

Indoor Unit



Floor Ceiling
10SEER/13SEER



A coil
22SEER/14SEER



Air Handler
10/13/14/22SEER



Fan Coil
10SEER/13SEER

UNITARY AIR CONDITIONERS



Duct Type Split (High Capacity)

This is a kind of duct type split air conditioner with higher capacity for commercial locations.

Outdoor Unit



Indoor Unit



R410A, 50Hz: 20~40kW (5.7~11.4USRT)
R22, 50Hz/60Hz: 20~65kW (5.7~18.5USRT)

Rooftop Packaged Unit

It's a kind of air cooled packaged air-conditioner which can be easily installed and maintained.

There are two series of products as below:

- **High Efficiency Type:** Small capacity and high efficiency Micro Channel Heat Exchanger, as well as R410A refrigerant.
- **Standard Type:** Wider range from 3USRT to 30USRT and R22 as refrigerant standard, capable of operating under tropical condition.

High Efficiency Type



R410A, 60Hz
3~5USRT

Standard Type



R22, 50Hz/60Hz
3~30USRT

Water-cooled Packaged Unit

With water cooled shell & tube condenser, the water cooled packaged air conditioning unit is favored for its compact packaged design & high energy efficiency, of which reliability, transportability is highly approved. The capacity range is from 32kW to 196kW that can be widely installed in the commercial buildings.



R22, 50Hz
32~196kW (9~56USRT)

GMV SERIES

CHILLER

The GMV Series is the VRF system that adopts variable capacity compressor and multiple indoor units to realize independent cooling or heating in different rooms. The product series are as below:

- **GMV IV:** The latest modular type Inverter VRF for large buildings (8~64HP).
- **GMV Mini:** Side discharge type Inverter VRF for residential houses (4~6HP).
- **GMV HR-II:** The latest modular type Inverter VRF with simultaneous cooling and heating function (8~64HP).
- **GMV D4:** The latest modular type Digital Scroll VRF for large buildings (8~72HP).
- **HOME GMV:** The perfect integration of Inverter VRF and Air to Water Heat Pump for residential houses (4~10HP).

Outdoor Units (R410A, 50Hz/60Hz)



GMV Mini / HOME GMV
10~16kW (4~6HP)



GMV IV / GMV D4 / GMV HR-II / HOME GMV
22.4~28kW (8~10HP)



GMV IV / GMV D4 / GMV HR-II
33.5~50.4kW (12~18HP)

Indoor Units



Wall Mounted
2.2~8kW



1-way Cassette
2.2~3.6kW



Floor Ceiling
2.8~14kW



Console
2.8~5kW



Flood Standing
7.1~14kW



Air Handler
7.1~14kW

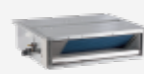
Indoor Units



Duct type
2.2~14kW



High ESP Duct
22.4~28kW



Slim Duct
2.2~7.1kW



Cassette
2.8~14kW



Compact Cassette
2.2~4.5kW

Hydro System (for HOME GMV only)



Hydro Box
5~30kW



Water Tank
250~400L

Centrifugal Chiller

High efficient water-cooled centrifugal chiller for large commercial buildings, of which compressor is designed & manufactured by GREE.



R134a, 50Hz
1400~7200kW (398~2044USRT)

Water-cooled Screw Chiller

High efficient water-cooled screw chiller with twin-screw compressor & flooded type evaporator for large commercial buildings.



R22, 50Hz
190~1704kW (54~485USRT)
R134a 50Hz
180~1275kW (52~364USRT)

Water-cooled Scroll Chiller

Water-cooled chiller equipped with high performance scroll compressor for commercial buildings.



R22, 50Hz
75~157kW (27~45USRT)

Air-cooled Screw Chiller

Air-cooled chiller with twin screw compressor and modular design, which can satisfy the cooling and heating requirement of commercial buildings.



R22, 50Hz
265~495kW (76~141USRT)
R134a, 50Hz
230~430kW (65~122USRT)
R134a, 60Hz
with Heat Recovery Function
230~430kW (65~122USRT)

Air-cooled Scroll Chiller

Air-cooled chiller with scroll compressor and modular design, which can satisfy the cooling and heating requirement of commercial buildings.

B Series



R22, 50Hz/ 60Hz
60~130kW (17~37USRT)

C Series



R22/R410A, 50Hz / 60Hz
65~165kW (18.5~47USRT)

Mini Chiller

Mini size of Air cooled chiller with scroll compressor for residential and light commercial buildings.

Split type



R22/R410A, 50Hz
8~15kW

Integral type



R22/R410A, 50Hz
19~45kW

TERMINAL



ATW & SPECIAL AIR CONDITIONERS



Fan Coil Unit

Various types of chilled water fan coil units can satisfy different requirements of indoor decoration.

<p>Concealed Ceiling Type</p>  <p>200~2000CFM</p>	<p>Cassette Type</p>  <p>300~1200CFM</p>	<p>Floor Ceiling Type</p>  <p>200~1200CFM</p>	<p>Wall Mounted Type</p>  <p>200~500CFM</p>
--	---	---	--

Air Handling Unit

With high capacity, high air flow volume, the chilled water air handling unit can satisfy the air treatment from basic requirement to precise processing.

<p>Horizontal Mounted Packaged Type</p>  <p>880~4700CFM</p>	<p>Vertical Packaged Type</p>  <p>1760~17600CFM</p>	<p>Modular Type</p>  <p>500~20200 CFM</p>
--	--	--

Ventilation

The ventilation equipments in HVAC projects such as Energy Recovery Ventilation, Air Curtain, Air Grille & Diffusers.

<p>ERV</p>  <p>120~1760CFM</p>	<p>Air Curtain</p>  <p>700~970CFM</p>	<p>Air Grille & Diffusers</p>  <p>Adjustable grille Return air grille Square diffuser</p>		
---	--	---	--	--

Versati Series

The Versati Series is a Multifunctional Air to Water Heating System with Inverter compressor and R410a refrigerant, it can highly satisfy the requirement of residential sanitary hot water and air conditioning by connecting to water tank and chilled water fan coil units.

<p>Outdoor unit</p>  <p>R410A, 50Hz 6~16kW</p>	<p>Hydro Unit</p>  <p>R410A, 50Hz 6~16kW</p>	<p>Water Tank</p>  <p>200~400L</p>
---	---	---

Air to Water Heat Pump Water Heater

The Air Source Water Heater can heat up the water by operating heat pump and absorbing the heat from the outdoor air, for sanitary hot water supplying.

<p>Circulating Type</p>  <p>Outdoor Unit R22/R134a, 50Hz 3.5~50kW</p>	 <p>Water Tank 50~300L</p>	<p>Modular Cycling Type</p>  <p>R22, 50Hz 18~65kW</p>
--	---	--

Close Control Air Conditioner

Air cooled unitary air conditioner for precise air temperature and humidity control, which is widely used in computing equipment rooms, laboratories and precise processing industries, etc.

<p>Indoor Unit</p>  <p>R22/R410A, 50Hz 5~40kW</p>	<p>Remote Condensing Unit</p>  <p>R22/R410A, 50Hz 5~40kW</p>
--	---

Marine Air Conditioner

The marine air conditioner is specially designed for small vessels such as yachts and fishing boats.

 <p>R410A, 50Hz/60Hz 5,000~16,000Btu/h</p>
