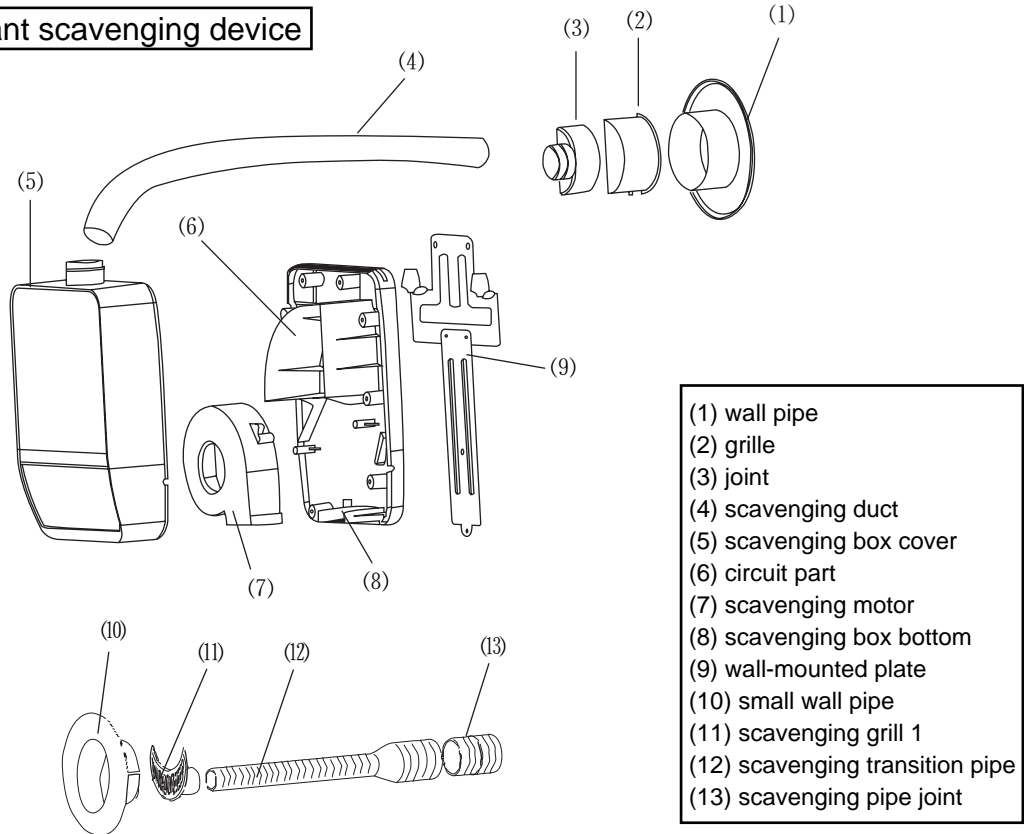


4.5 Operation and installation for scavenging device

Independent scavenging device



- (1) wall pipe
- (2) grille
- (3) joint
- (4) scavenging duct
- (5) scavenging box cover
- (6) circuit part
- (7) scavenging motor
- (8) scavenging box bottom
- (9) wall-mounted plate
- (10) small wall pipe
- (11) scavenging grill 1
- (12) scavenging transition pipe
- (13) scavenging pipe joint

Main parameter for independent scabenging device

Mode	HZ01、HZ02
Rated power (W)	2W
Rated current (A)	0.1A
Rated voltage (V/Hz)	220V/50Hz
Outline dimension (mm)(L*W*H)	270×190×85
Air volume (m3/h)	12m ³ /h
Noise dB(A)	22dB (A)