



# **Owner's Manual**

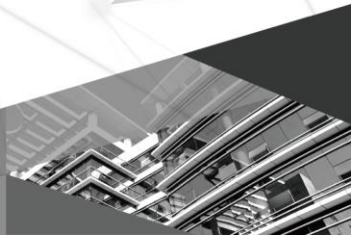
## **Original Instructions**

### Intelligent Billing Eudemon

Model:  
FE11-24/D4(B)

Thank you for choosing this product. Please read this Owner's Manual carefully before operation and retain it for future reference. If you have lost the Owner's Manual, please contact the local agent or visit [www.gree.com](http://www.gree.com) or send an email to [global@gree.com.cn](mailto:global@gree.com.cn) for the electronic version.

GREE ELECTRIC APPLIANCES, INC. OF ZHUHAI



# To Users

Thank you for selecting Gree's product. Please read this instruction manual carefully before installing and using the product, so as to master and correctly use the product. In order to guide you to correctly install and use our product and achieve expected operating effect, we hereby instruct as below:

- (1) This appliance is not intended for use by persons (including children) with reduced physical, sensory or mental capabilities, or lack of experience and knowledge, unless they have been given supervision or instruction concerning use of the appliance by a person responsible for their safety. Children should be supervised to ensure that they do not play with the appliance.
- (2) This instruction manual is a universal manual, some functions are only applicable to particular product. All the illustrations and information in the instruction manual are only for reference, and control interface should be subject to actual operation.
- (3) In order to make the product better, we will continuously conduct improvement and innovation. We have the right to make necessary revision to the product from time to time due to the reason of sales or production, and reserve the right to revise the contents without further notice.
- (4) For personal injury or property loss and damage caused by improper

operation such as improper installation and debugging, unnecessary maintenance, violation of related national laws and rules and industrial standard, and violation of this instruction manual, etc., we will bear no liability.

- (5) The final right to interpret for this instruction manual belongs to Gree Electric Appliances Inc. of Zhuhai.

# Contents

1 SAFETY NOTICES (PLEASE BE SURE TO ABIDE ) .....	1
2 INSTALLATION NOTICES .....	2
2.1 IMPORTANT NOTICES .....	2
2.2 OPERATION NOTICES.....	3
2.3 OTHER NOTICES .....	3
3 INSTALLATION INSTRUCTIONS .....	4
4 REGISTER .....	10
5 COMMON PROBLEM .....	12

# 1 Safety Notices (Please be sure to abide )



Warning: If not abide strictly, it may cause severe damage to the unit or the people.



Note: If not abide strictly, it may cause slight or medium damage to the unit or the people.



This sign indicates that the operation must be prohibited. Improper operation may cause severe damage or death to people.



This sign indicates that the items must be observed. Improper operation may cause damage to people or property.



**WARNING!**

This product can't be installed at corrosive , inflammable or explosive environment or the place with special requirements, such as kitchen. Otherwise, it will affect the normal operation or shorten the service life of the unit, or even cause fire hazard or serious injury. As for above special places, please adopt special air conditioner with anti-corrosive or anti-explosion function .

## 2 Installation Notices

Intelligent Billing Eudemon is a professional billing software with main function of interacting with Power Billing Gateway and getting data from it. Meanwhile, it provides billing management and basic monitoring function of unit. To ensure normal installation and stable operation of the software, please read the following notices. Please make sure you have acknowledged and accepted the following notices before installing and operating this software.

### 2.1 Important Notices

- (1) Make sure the computer for installing Intelligent Billing Eudemon use a new operation system, to avoid installation failure caused by conflicting with other application software.
- (2) Do not use the computer installed with Intelligent Billing Eudemon in other purposes except operating Intelligent Billing Eudemon. Do not install other application software in the computer installed with Intelligent Billing Eudemon.
- (3) After finishing commissioning, make sure Intelligent Billing Eudemon is always in operation status and energy-saving mode of computer is not activated. Otherwise, the information generated by the system cannot be synchronized to Intelligent Billing Eudemon.

## 2.2 Operation Notices

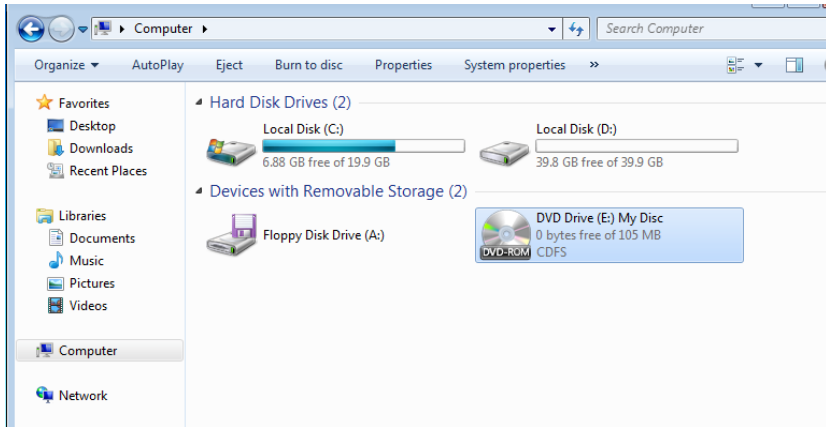
- (1) Do not change the configuration of Intelligent Billing Eudemon and computer settings by yourself.
- (2) Do not install security software, such as antivirus software and firewall, in the computer.

## 2.3 Other Notices

- (1) Gree reserves the final right to interpret the billing way of this software.
- (2) Gree doesn't accept any testing or evaluation by any authority or individual for the rationality of the billing way of Gree Intelligent Billing System.
- (3) Gree will not take any legal responsibilities for any operation failure and/or any losses caused by any of the following reasons or force majeure: hacker attack, government regulation, power problem, computer problem, network problem, communication wire problem, etc.
- (4) Gree will not take any responsibilities for the problems caused by changes of the software or computer configuration by the user.
- (5) Gree will not take any responsibilities for increasing or decreasing air conditioner information without prior communication with Gree.
- (6) The picture used in this manual is just for illustration; final effect please refer to the final product.






### 3 Installation Instructions

- (1) Find out the flash disk in the carton box; insert the flash disk into the computer; double-click “This PC” to open “File explorer” and wait for loading of flash disk.

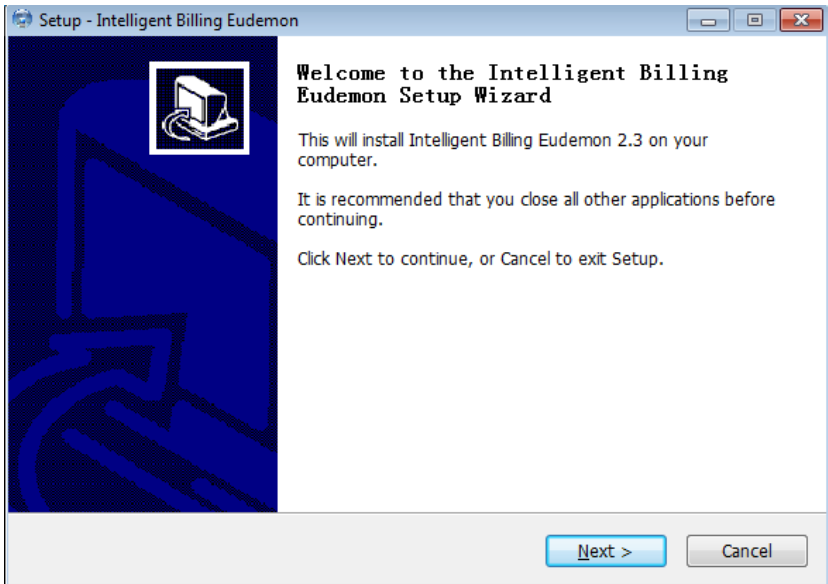




- (2) Double-click CD Driver to enter driver directory; right-click “Launcher.exe” to select “Run as administrator” and then start installation.

Name	Date modified	Type	Size
 English	12/5/2017 3:35 PM	File folder	
 help	12/5/2017 3:35 PM	File folder	
 image	12/5/2017 3:35 PM	File folder	
 config	12/5/2017 3:38 PM	XML Document	4 KB
 Launcher	12/31/2011 5:47 AM	Application	1,191 KB

(3) When installation starts, click “Next” according to operation guide.

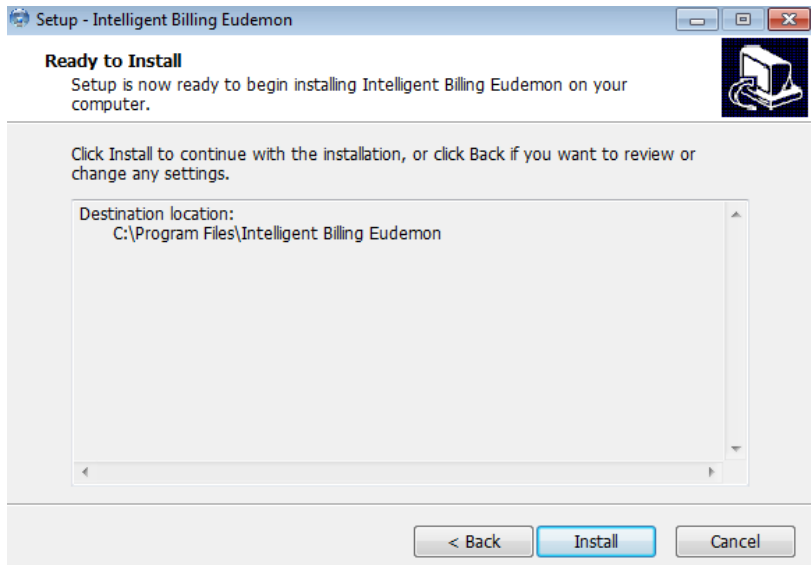


(4) After reading the agreement carefully, please select "Accept" or "Not accept".

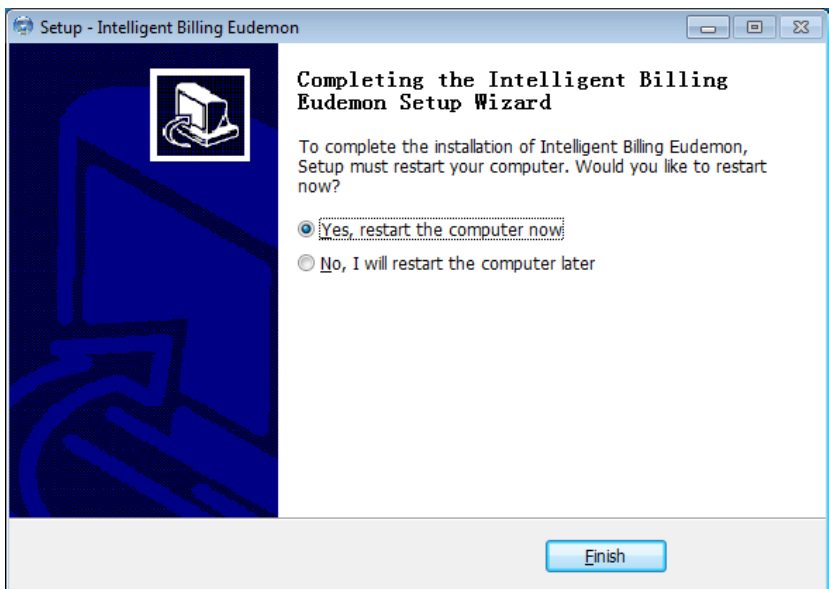
If you select "Accept", click "Next" to continue installation.



(5) Click “Install” to enter installation status.

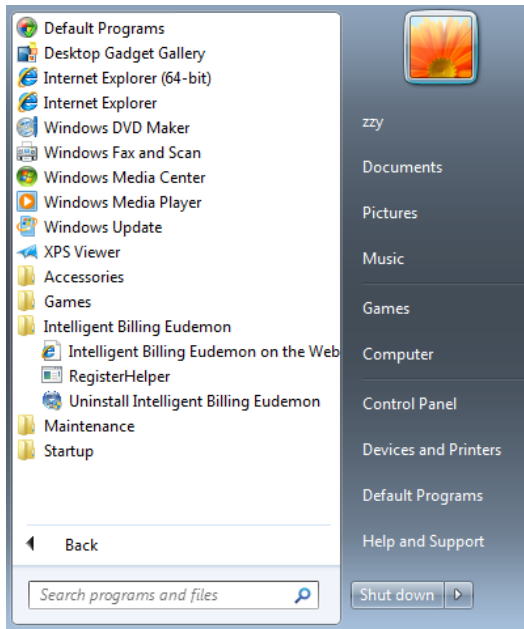


(6) After finishing installation, click “Finish” to restart the computer.

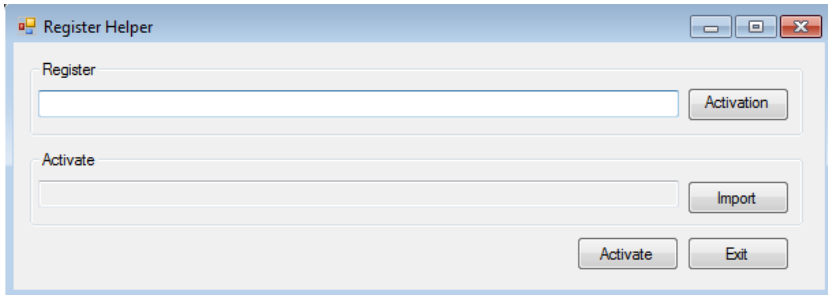


## 4 Register

- (1) After the software is installed, registration and activation is required before normal operation. Click Start on the computer's desktop and look for RegisterHelper of the software in All Programs. Then right click RegisterHelper and run as administrator.



- (2) Click the registration code, then you will have a series of numbers. Copy and send the numbers to our technical staff for activation. When you receive the .lic activation file from our technical staff, import the file and click the activation button. If you see the prompt that says registration is successful, it means you have completed the registration and activation.



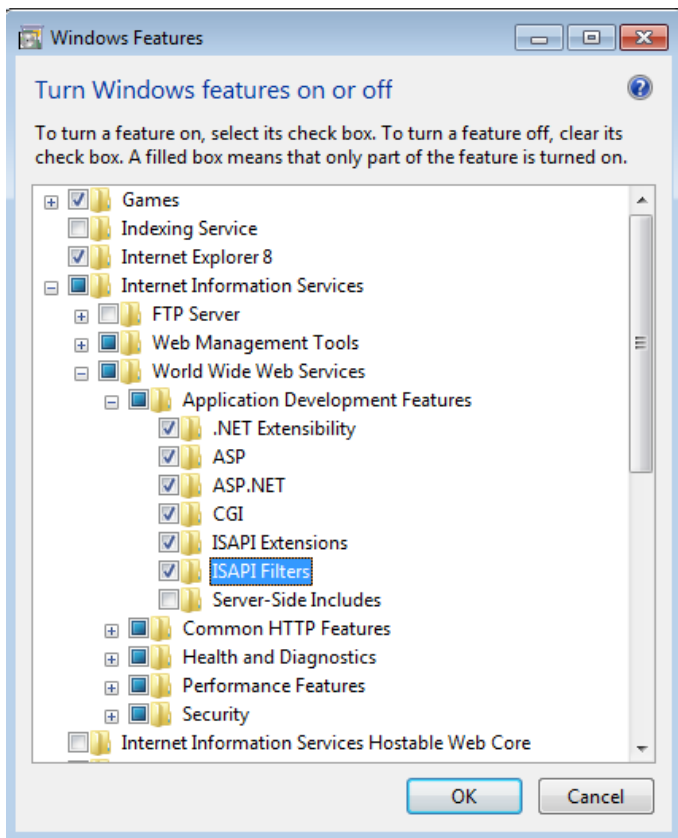
- (3) After successfully registered, open the browser (we recommend the latest Firefox or Google browser) and input `http:\\localhost:8888\\HTML\\login.aspx`. Then log in and use. For the using method, please refer to the Help Document of the software.

## 5 Common problem

**Webpage can't open after installation. It says Page Not Exists or Page Can't Open.**

**Solution No.1:** Open the computer's Control Panel -» Programs and Features -» Turn Windows Features On or Off. Tick all the items under Internet Information Services, as shown below. Click OK to save the setting. Then restart the computer and install again.





Solution No.2: Open the computer's Task Manager and check whether Calculator Service and Mysql are running. If some service has stopped, please check whether other irrelevant software is installed in the computer, for example, antivirus software. Check whether the system is a professional or flagship version of win7 or win 10. Reinstall the software in a clean operating system.



GREE ELECTRIC APPLIANCES, INC. OF ZHUHAI

Add: West Jinji Rd, Qianshan, Zhuhai, Guangdong, China, 519070

Tel: (+86-756) 8522218

Fax: (+86-756) 8669426

E-mail: [gree@gree.com.cn](mailto:gree@gree.com.cn) [www.gree.com](http://www.gree.com)



600005000649