



Owner's Manual

Original Instructions

Intelligent Remote Eudemon

Thank you for choosing commercial air conditioners. Please read this Owner's Manual carefully before operation and retain it for future reference.

If you have lost the Owner's Manual, please contact the local agent or visit www.gree.com or send an email to global@gree.com.cn for the electronic version.

GREE ELECTRIC APPLIANCES, INC. OF ZHUHAI

A decorative background graphic on the right side of the page, featuring a network of interconnected nodes and lines, with a large, dark, geometric shape at the bottom right corner.

To Users

Thank you for selecting Gree's product. Please read this instruction manual carefully before installing and using the product, so as to master and correctly use the product. In order to guide you to correctly install and use our product and achieve expected operating effect, we hereby instruct as below:

- (1) This appliance is not intended for use by persons (including children) with reduced physical, sensory or mental capabilities, or lack of experience and knowledge, unless they have been given supervision or instruction concerning use of the appliance by a person responsible for their safety. Children should be supervised to ensure that they do not play with the appliance.
- (2) This instruction manual is a universal manual, some functions are only applicable to particular product. All the illustrations and information in the instruction manual are only for reference, and control interface should be subject to actual operation.
- (3) In order to make the product better, we will continuously conduct improvement and innovation. We have the right to make necessary revision to the product from time to time due to the reason of sales or production, and reserve the right to revise the contents without further notice.
- (4) For personal injury or property loss and damage caused by improper

operation such as improper installation and debugging, unnecessary maintenance, violation of related national laws and rules and industrial standard, and violation of this instruction manual, etc., we will bear no liability.

- (5) The final right to interpret for this instruction manual belongs to Gree Electric Appliances Inc. of Zhuhai.

Contents

1 SAFETY NOTICES (PLEASE BE SURE TO ABIDE)	1
2 INSTALLATION NOTICES	1
2.1 IMPORTANT THINGS	2
2.2 USAGE PRECAUTIONS	2
2.3 OTHERS	3
3 INSTALLATION GUIDE	4

1 Safety Notices (Please be sure to abide)



Warning: If not abide strictly, it may cause severe damage to the unit or the people.



Note: If not abide strictly, it may cause slight or medium damage to the unit or the people.



This sign indicates that the operation must be prohibited. Improper operation may cause severe damage or death to people.



This sign indicates that the items must be observed. Improper operation may cause damage to people or property.



WARNING!

This product can't be installed at corrosive , inflammable or explosive environment or the place with special requirements, such as kitchen. Otherwise, it will affect the normal operation or shorten the service life of the unit, or even cause fire hazard or serious injury. As for above special places, please adopt special air conditioner with anti-corrosive or anti-explosion function .

2 Installation Notices

Intelligent Remote Eudemon is a professional software toolkit on long-distance control. Its main functions include interconnection with gateway, data acquisition, and monitoring over unit status. In order to ensure correct installation and stable operation, please read the following instructions first. Please install and use this software after you understand and accept the following terms and conditions.

2.1 Important Things

- (1) In order to avoid installation failure caused by software confliction, please make sure the Intelligent Remote Eudemon will be installed in a computer that uses a new operating system with at least two disks, for example, disk C and disk D.
- (2) This software can be installed in Win7 or Win10 64 operating system.
- (2) The computer that is installed with the Intelligent Remote Eudemon can only be used for running the Intelligent Remote Eudemon.
- (3) After debugging, please make sure the Intelligent Remote Eudemon is always under working condition and the computer is not in energy-saving mode; otherwise, system information cannot be synchronized into the Intelligent Remote Eudemon.

2.2 Usage Precautions

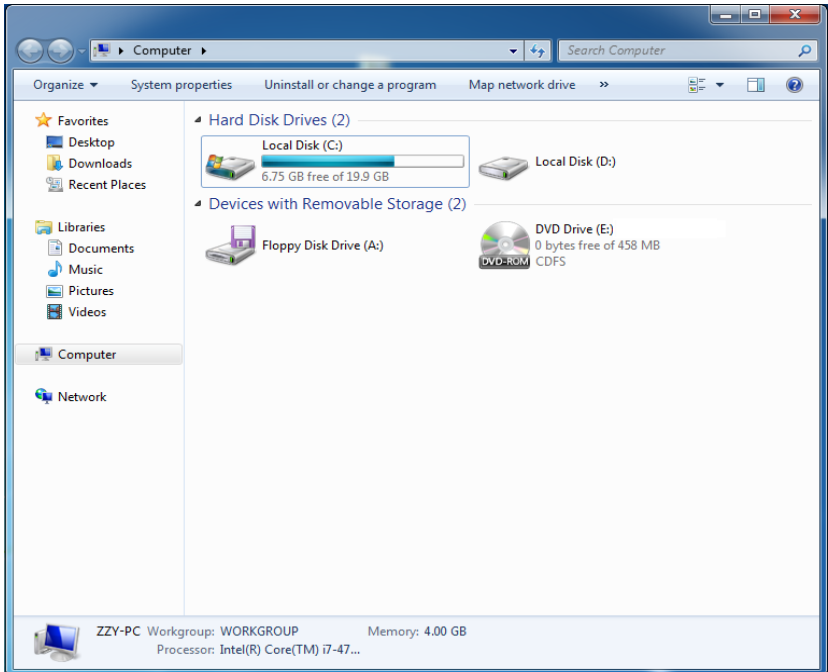
- (1) Do not change the configuration of Intelligent Remote Eudemon and the computer setting arbitrarily.
- (2) Do not install antivirus software, firewall or other safety software into the computer.
- (3) During debugging, please make sure that outdoor units, indoor units, gateways and relevant air conditioning control devices are all powered on.

2.3 Others

- (1) Gree Electric Appliances Inc. of Zhuhai reserves the right for the final interpretation of the monitoring functions of the software.
- (2) Gree Electric Appliances Inc. of Zhuhai will not accept any test or evaluation from any organization or person on the monitoring functions of the Intelligent Remote System.
- (3) Our company will not take responsibility for product failure and/or other losses caused by hacker attack, government regulation, power failure, computer failure or any other problems related to network, communication lines, or force majeure.
- (4) Our company assumes no responsibility for any problems caused by changing the configuration of the software or computer arbitrarily without contacting Gree Electric Appliances Inc. of Zhuhai.
- (5) Our company assumes no responsibility for any problems caused by adding/deleting or changing the information of air conditioners arbitrarily without contacting Gree Electric Appliances Inc. of Zhuhai.
- (6) Graphics in this manual are only for the convenience of illustration. Please refer to the actual product for the final look.

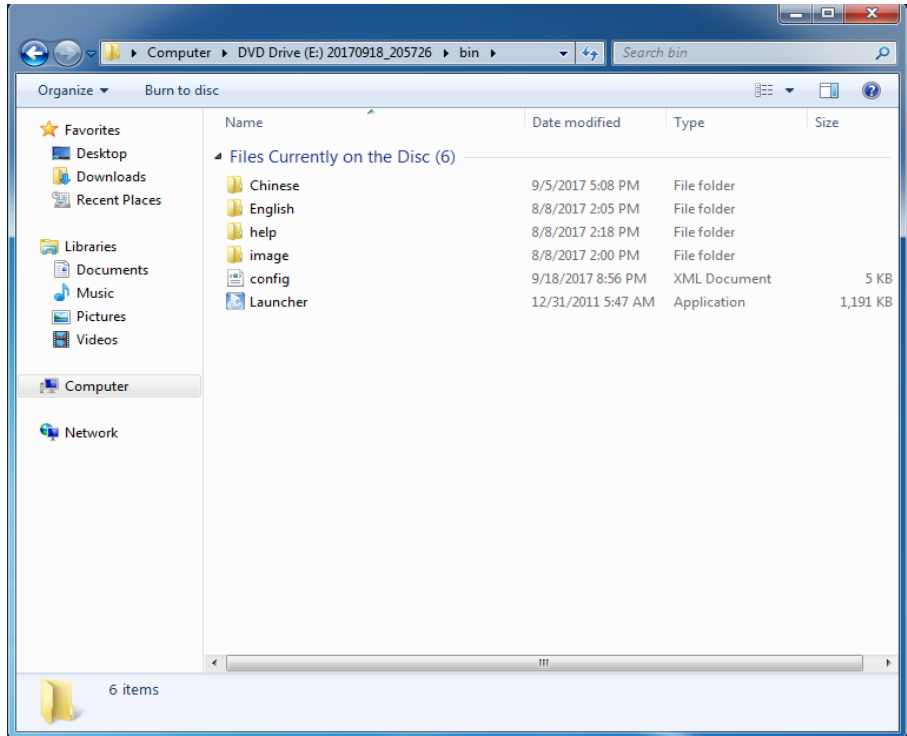
3 Installation Guide

(1) Take out the USB from the package box and then insert it into the computer. Double click “Computer”, and select “Open”, then “File Explorer”. Wait until the USB finishes loading, and “CD Drive” will pop up.



Intelligent Remote Eudemon

(2) Double click the CD Drive and enter the directory. Right click “Launcher” and select “Run as Administrator” to start up the installation procedure.



(3) Click “Install Software” in the pop-up window and enter the installation interface of Intelligent Remote Eudemon.

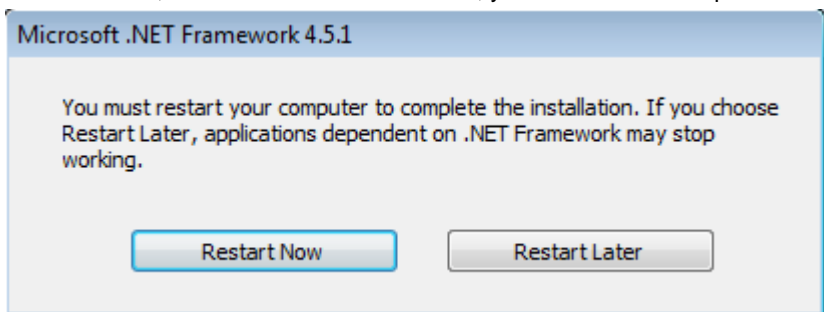


Note:

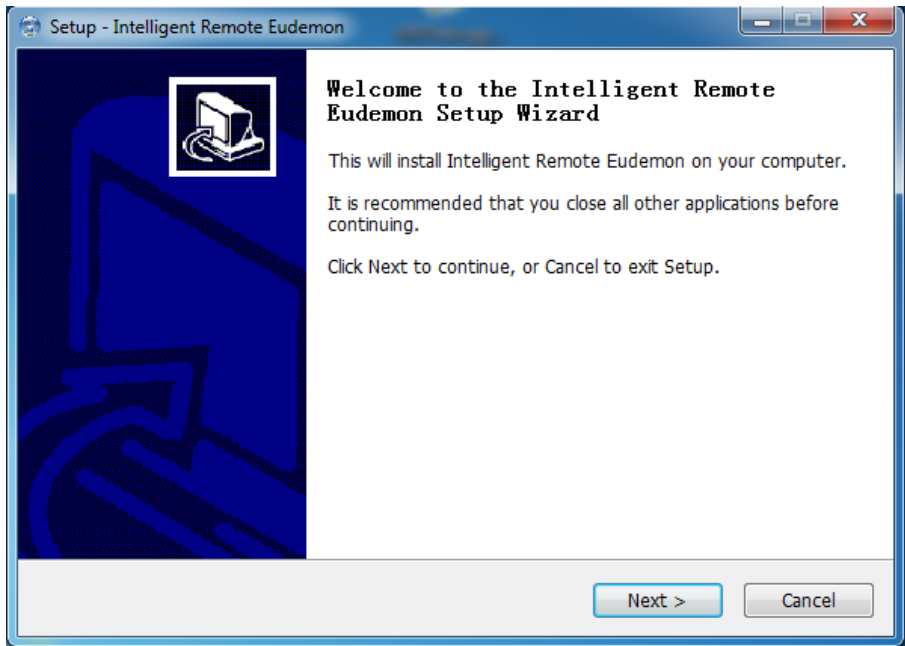
Because of system version, some systems may not be able to complete auto installation. In this case, follow the steps below to complete the installation manually:

1. Click “Install .Net Framework 4.5.1” to install .Net Framework independently.
2. Click “Install JDK 1.6” to install JDK independently.
3. Click “Installation Help” to open the electronic version of installation manual.
4. Click “Register Helper” to open the software registration tool.

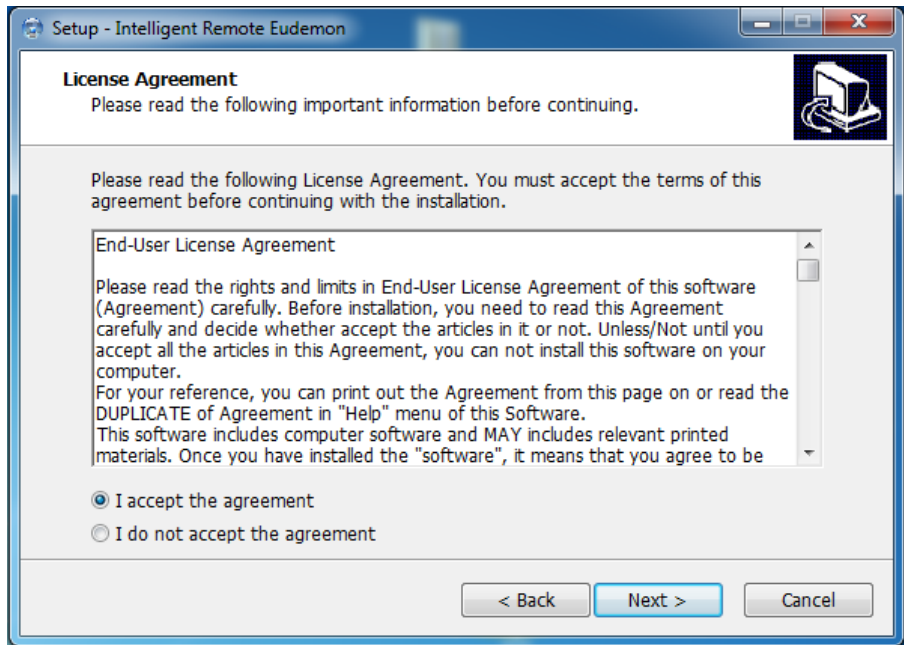
(4) Install JDK 1.6, Install .Net Framework 4.5.1 , you must restart computer.



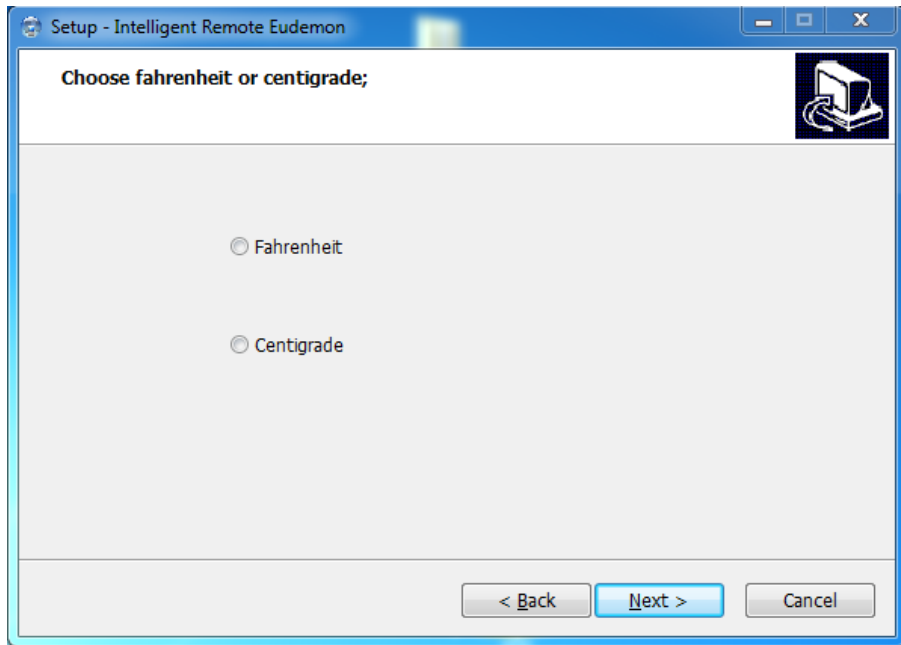
(5) When the installation program is activated, click “Next” according to the guidance.



(6) Before selecting “Accept” or “Not Accept”, please read the agreement carefully. If you accept the agreement, click “Next” to continue installation.

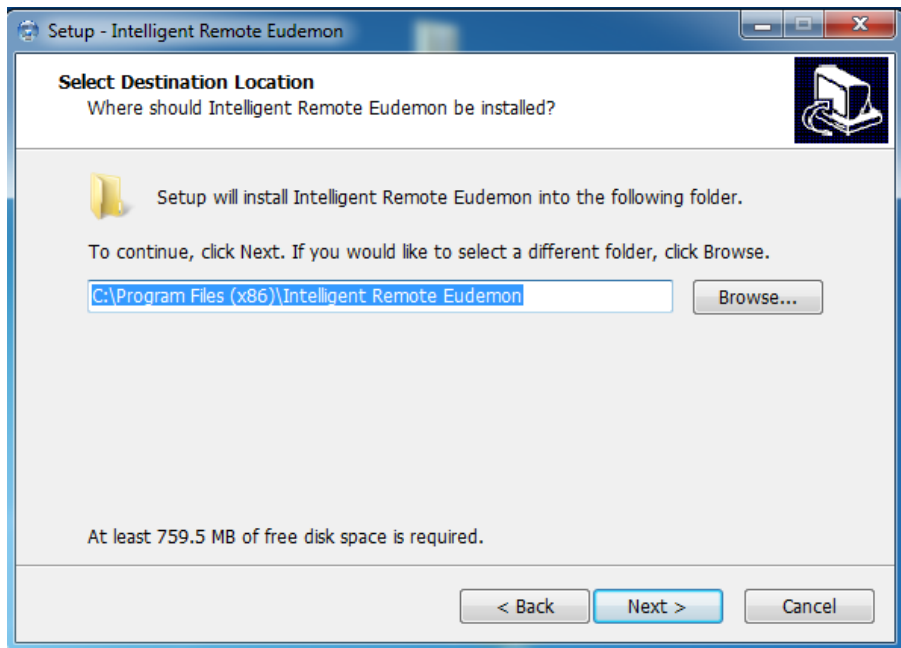


(7) Choose fahrenheit or centigrade.

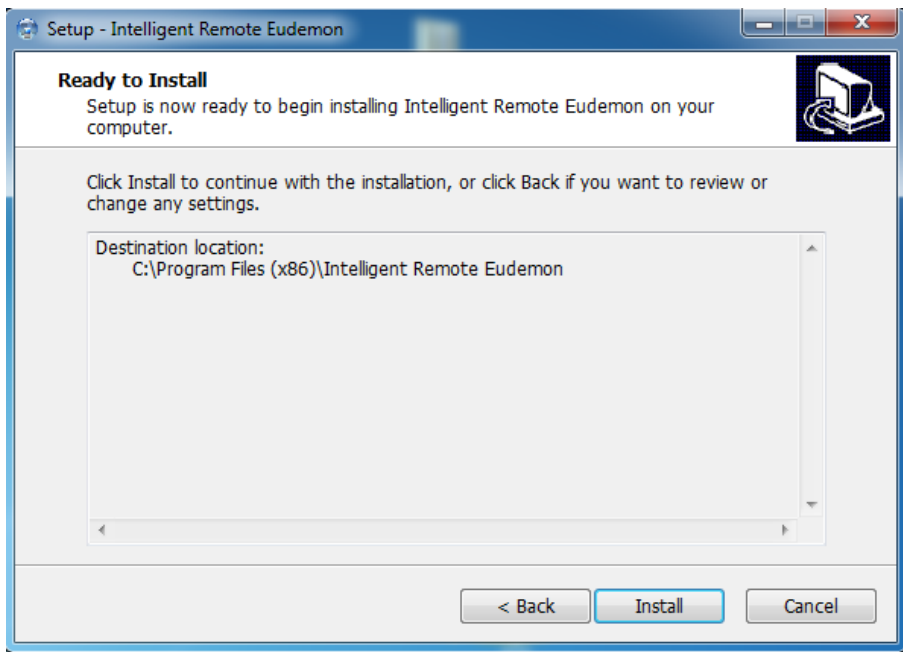


Intelligent Remote Eudemon

(8) Click “Browse” to select the installation route for the software. Then click Next to continue installation.

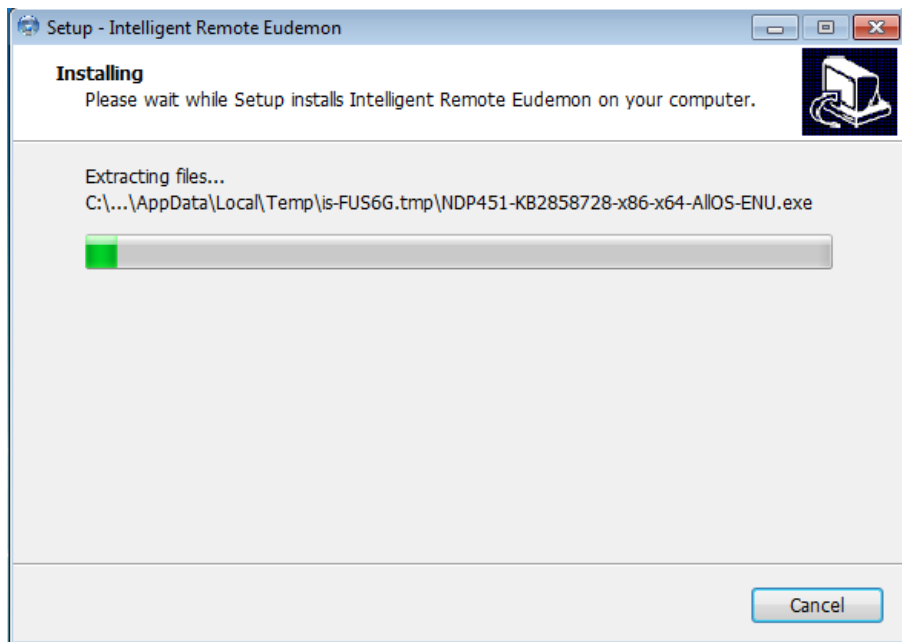


(9) After confirming the information, click “Install” to begin installation.

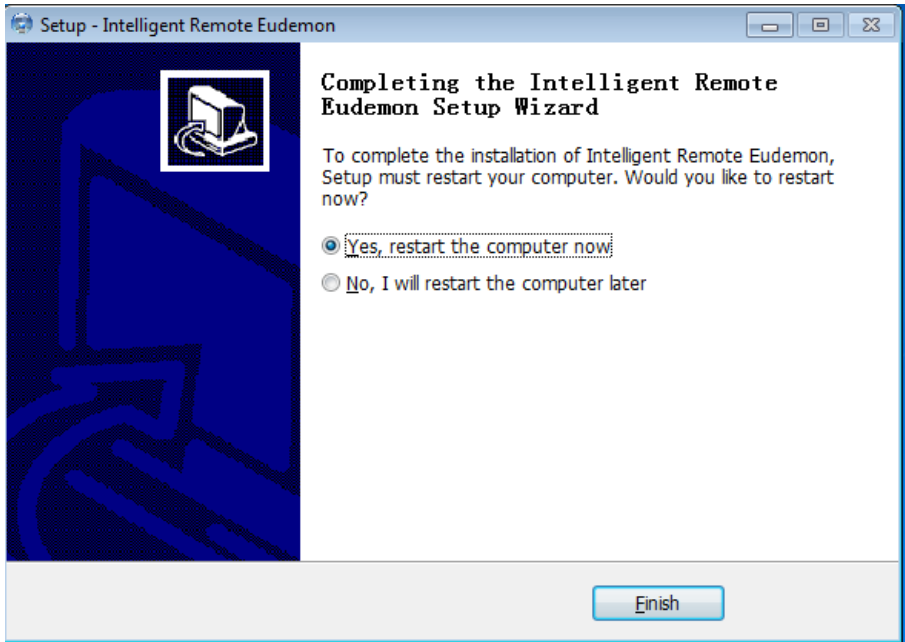


Intelligent Remote Eudemon

(10)The installation will take some time. Please wait patiently for about 5~15 minutes.



(11)When the installation is finished, you will be asked whether to restart the computer or not. We recommend you restarting the computer before use.



Intelligent Remote Eudemon

(12) Open a browser (the latest Firefox, V53 or later, or Google, V43 or later) and then input <http://localhost:8996/> to log in and use. For the operation method, please refer to the Helping document of the software. Administrator account: admin; default password: 123456).

The screenshot shows the login interface for Intelligent Remote Eudemon. At the top, there is a navigation bar with the following links: Main page, Device monitoring, Device manage, Schedule manage, Gateway manage, Software setting, Help document, and Login. The main content area has a teal background with the text 'Intelligent Remote Eudemon' centered. Below this is a white login form with the following elements:

- Username:
- Password:
- Language: (dropdown menu)
- Remember password?
- Login:

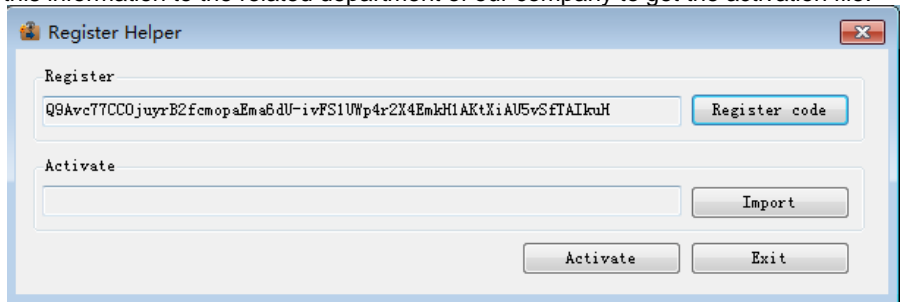
©All Rights Reserved

Note: When the website is opened for the first time, it will take a few seconds to load the files. Please register in the software before log in the software for operation.

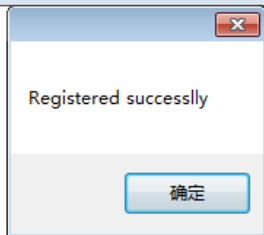
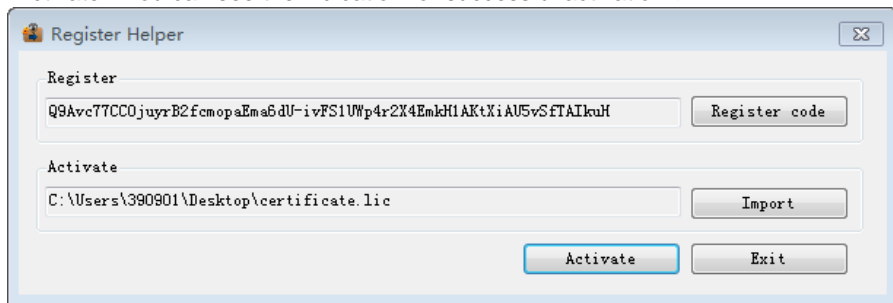
(13) After the system restarts, open the installation program again and click “Registration Assistant” to open the software registration tool.



(14) Click “Register Code” to generate the registration information of this unit. Send this information to the related department of our company to get the activation file.



(15) Use the activation file provided by our company. Click “Import”, and then click “Activate”. You can see the indication for successful activation.。





GREE ELECTRIC APPLIANCES, INC. OF ZHUHAI

Add: West Jinji Rd, Qianshan, Zhuhai, Guangdong, China, 519070

Tel: (+86-756) 8522218

Fax: (+86-756) 8669426

E-mail: gree@gree.com.cn www.gree.com



600037060012